

IMPORTANT DESIGN (DAY 2)

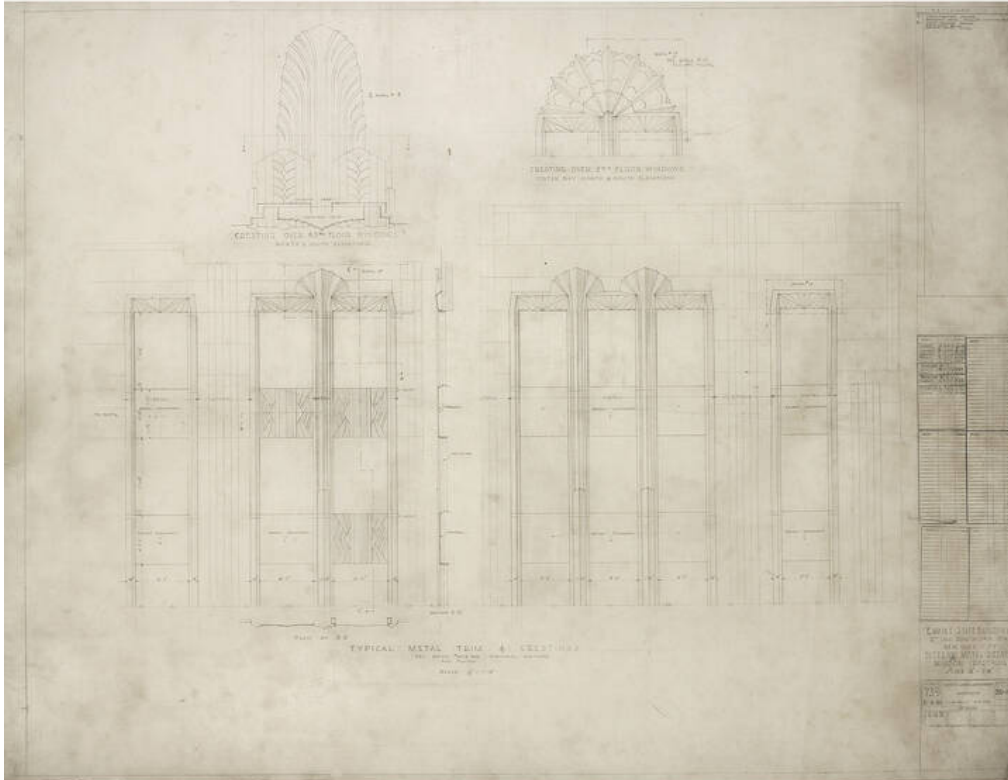
Auction

11 December 2008
10:00 am ct

Wright

1440 West Hubbard Street
Chicago IL
t 312 563 0020
f 312 563 0040

wright20.com
bid@wright20.com



628

SHREVE, LAMB & HARMON ARCHITECTS

Empire State Building Architectural Base Building Working Drawings

USA, 1930-1931 | pencil on tracing paper, pencil on linen
36 h x 48 w in (91 x 122 cm)

This lot includes sixteen renderings of various light cornice details, spandrels, casement windows, a lobby elevator door, store fronts and windows.

Estimate: \$15,000–20,000

Result: \$14,400

WRIGHT