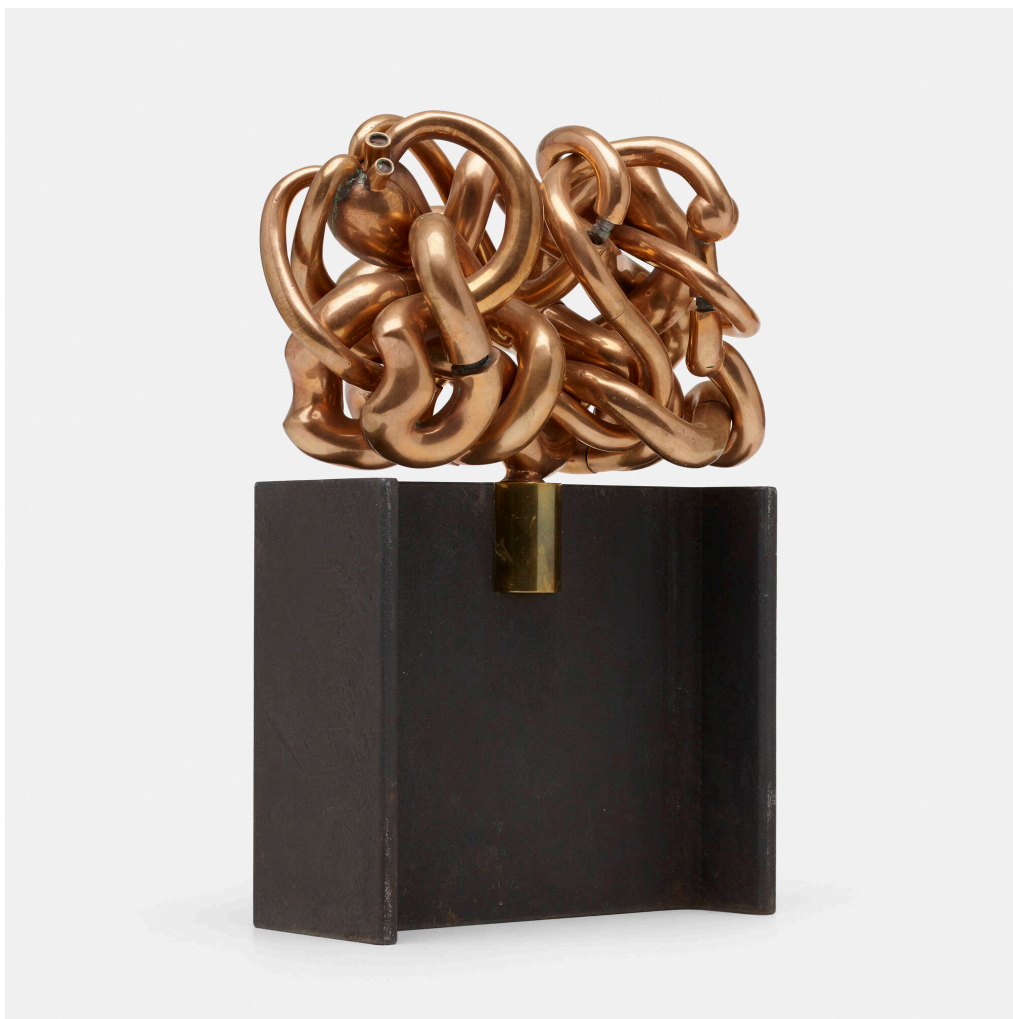


ART + DESIGN PART 1



202

MIGUEL BERROCAL

Siextasis

bronze, steel

11 h x 5 w x 3 d in (28 x 13 x 8 cm)

The concept of multiples was central to Miguel Berrocal's artistic practice. Just as painters used printing techniques to reproduce graphic works, Berrocal sought to make his three-dimensional sculptures accessible to a broader audience using advanced casting technology. As a result, many of the artist's works were planned to be produced in large editions, however, given the complexity of the forms, full editions were often not completed.

Impressed signature and number to base 'Berrocal 355/2000'. This work is number 355 from the edition of 2000 of which only 249 examples in bronze were executed. This three-dimensional mechanical puzzle sculpture is one of the studies for the *Monument to Picasso* and is composed of twenty interlocking elements. Sold with original book containing instructions for assembly. Wright would like to thank the Berrocal foundation for their assistance in the cataloguing of this lot.

Provenance: Acquired directly from the artist by David May, Portland, OR

Literature: *Antologica Berrocal (1955-1984)*, Gallego, Opus 148, ppg. 249, 284-285

Auction

09 April 2020

noon ct

Wright

1440 West Hubbard Street

Chicago IL

t 312 563 0020

f 312 563 0040

wright20.com

bid@wright20.com

WRIGHT

ART + DESIGN PART 1

Estimate: \$2,000–3,000

Result: \$4,688

Auction

09 April 2020

noon ct

Wright

1440 West Hubbard Street

Chicago IL

t 312 563 0020

f 312 563 0040

wright20.com

bid@wright20.com

WRIGHT