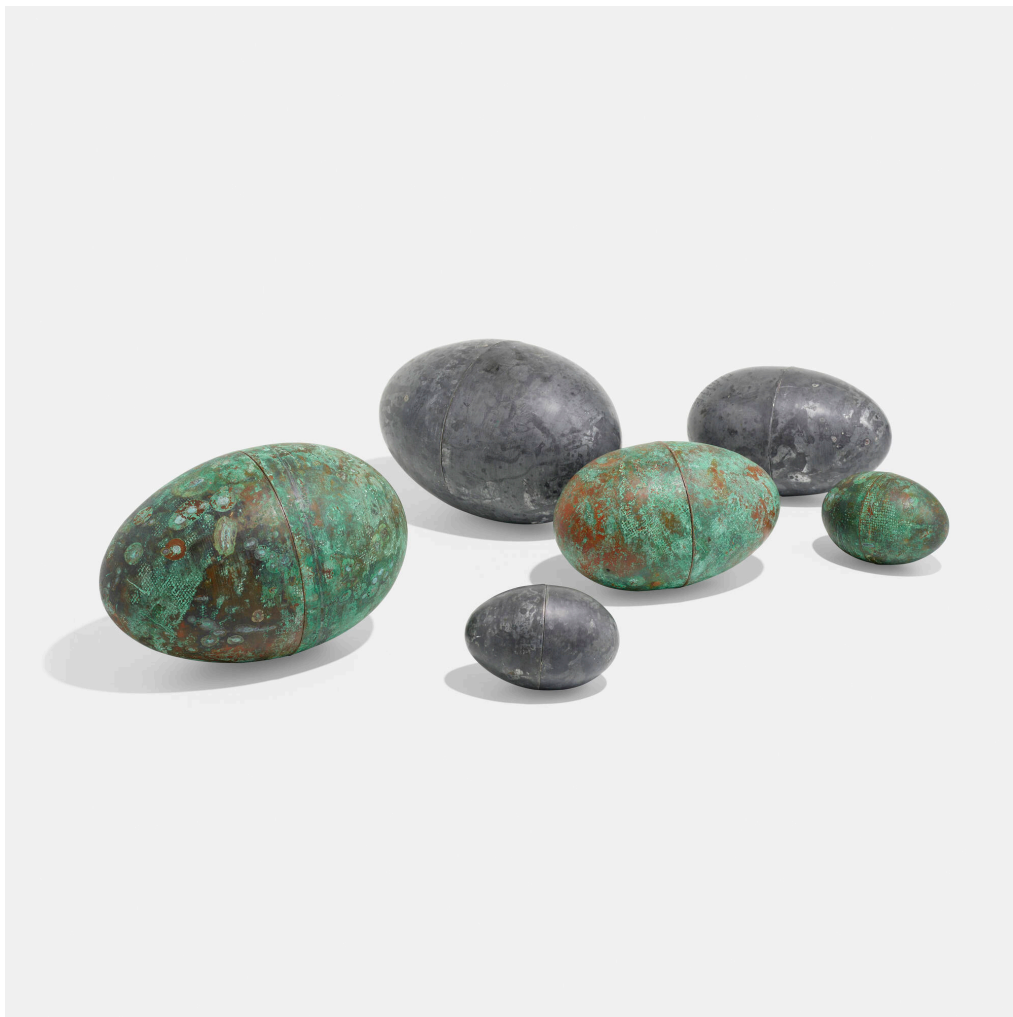


# ESSENTIAL DESIGN



119

## TAGE ANDERSON

### Collection of six eggs

Denmark, c. 1980 | patinated copper, zinc

7¼ h × 11 w × 7 d in (18 × 28 × 18 cm)

5½ h × 8½ w × 5¼ d in (14 × 22 × 13 cm)

3½ h × 5¼ w × 3½ d in (9 × 13 × 9 cm)

Collection is comprised of two three-piece sets of the artist's iconic egg forms.

**Provenance:** Acquired directly from the artist in the 1980s by the present owner

**Estimate:** \$2,000–3,000

## Auction

03 August 2023

11:00 am ct

## Wright

1440 West Hubbard Street

Chicago IL

t 312 563 0020

f 312 563 0040

[wright20.com](http://wright20.com)

[bid@wright20.com](mailto:bid@wright20.com)

WRIGHT